

# MONTHLY MEMBERSHIP PROGRESS REPORT

LOCATION MARYLAND

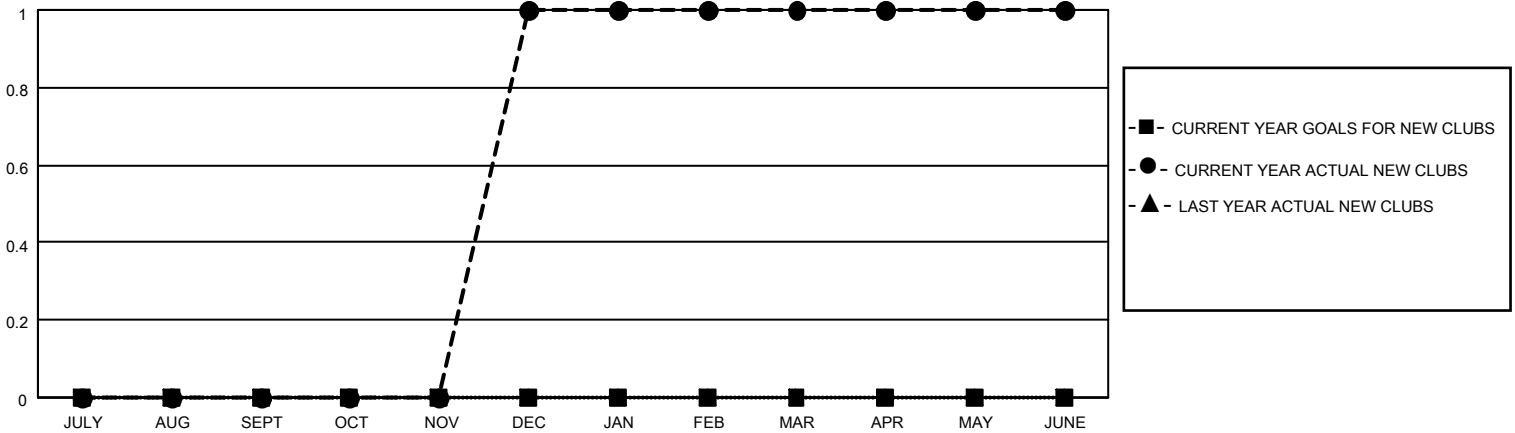
District 22 C

Results as of: 6/30/2022

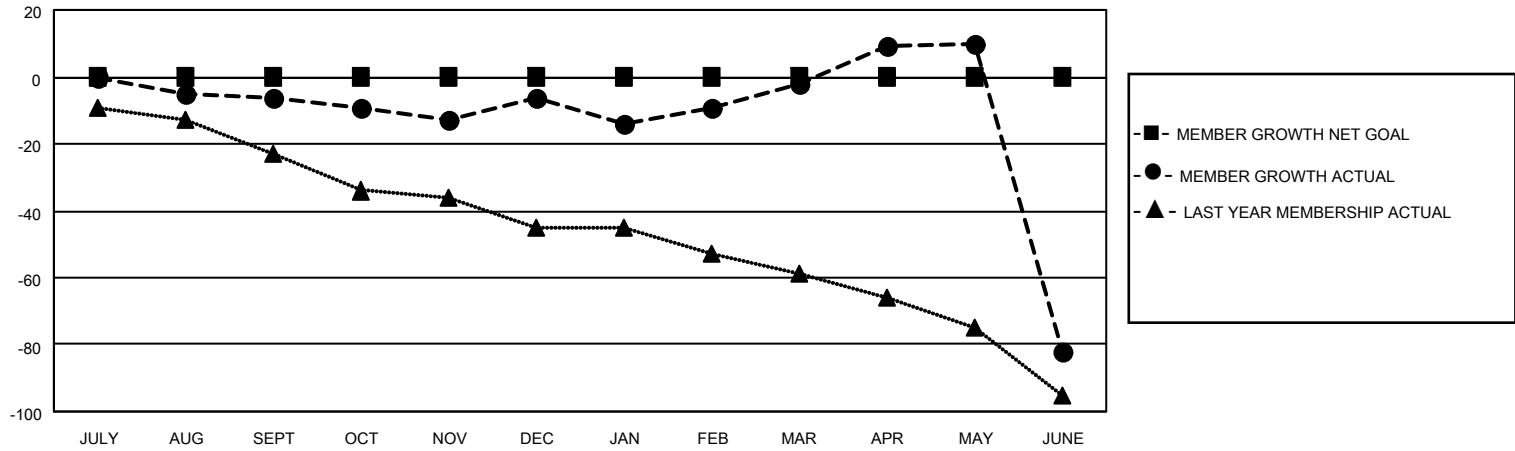
Clubs			
RESULTS FOR 2021-2022			
QUARTER	NEW CLUB GOAL	NEW CLUBS	DROPPED CLUBS
JULY/AUG/SEPT	0	0	2
OCT/NOV/DEC	0	1	0
JAN/FEB/MAR	0	0	1
APR/MAY/JUNE	0	0	0

Members			
RESULTS FOR 2021-2022			
QUARTER	MEMBER GROWTH NET GOAL	MEMBER GROWTH ACTUAL	DROPPED MEMBERS ACTUAL (including transfers)
JULY/AUG/SEPT	0	24	29
OCT/NOV/DEC	0	43	40
JAN/FEB/MAR	0	29	24
APR/MAY/JUNE	0	53	108

**GOALS AND ACTUAL NEW CLUBS CUMULATIVE**



**GOALS AND ACTUAL MEMBERS CUMULATIVE**



**DROPPED CLUBS: 3**

**27 CLUBS OF 46 ADDED 1 OR MORE NEW MEMBERS**

**GENDER DISTRIBUTION**

MALE	726 (65.35%)
FEMALE	385 (34.65%)
NON BINARY	0 (0.00%)
PREFER NOT TO ANSWER	0 (0.00%)

**DROPPED MEMBERS**

[CLICK HERE FOR CUMULATIVE MEMBERSHIP DATA](#)

DECEASED	31
CLUB CANCELLED	10
OTHER	160
<b>TOTAL</b>	<b>201</b>

TOTAL FAMILY UNIT MEMBERS 170

FAMILY MEMBERS PAYING HALF DUES 91